



Cross Lanes Christian School Re-Entry Plan 2020/2021

Prepared by Eddie Riley,
Administrator
7/2020



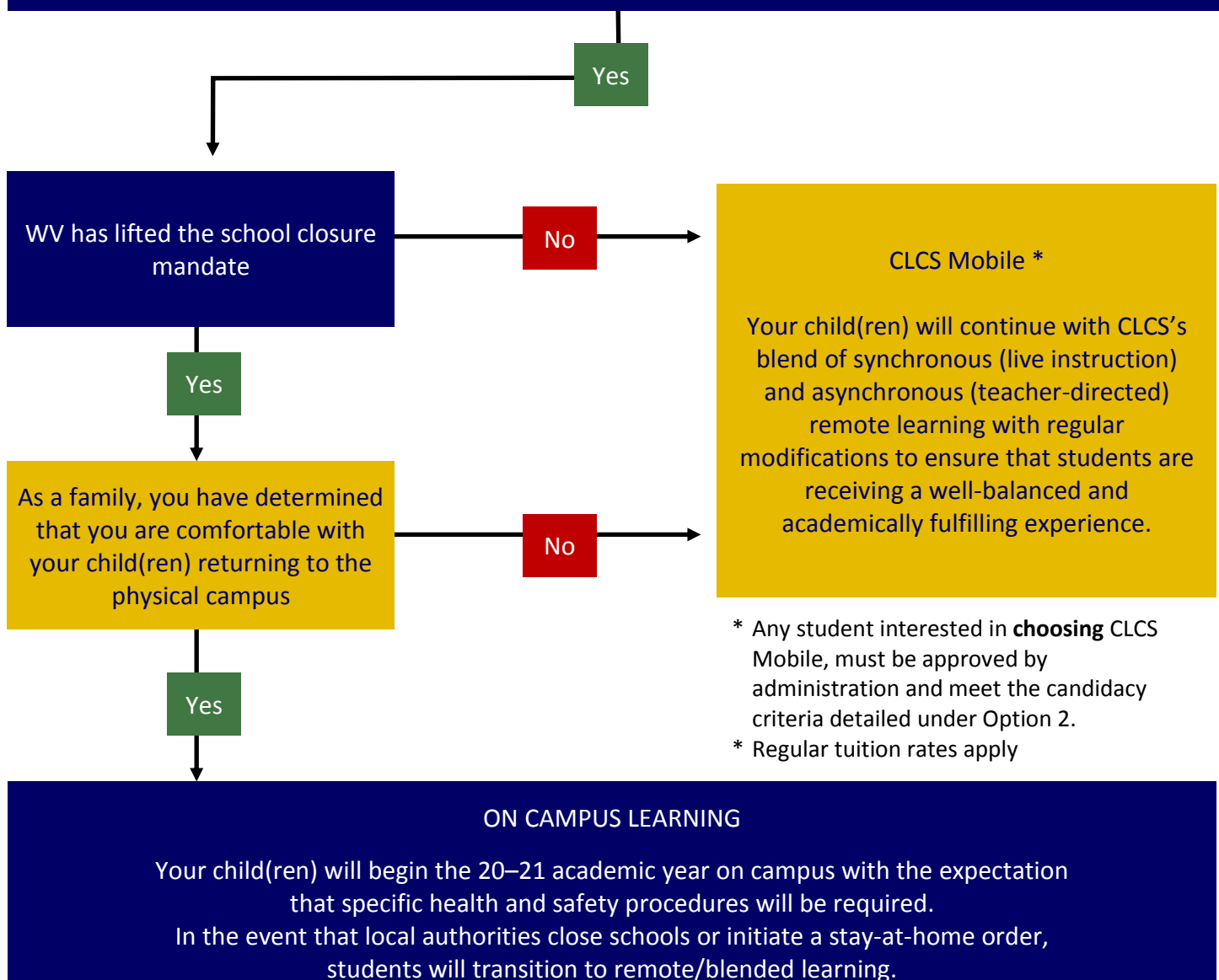
Re-Entry Planning

The Process

Cross Lanes Christian School has established a re-entry task force committee which is working diligently to develop a re-entry strategy that allows for flexibility, transparency and prioritizes the health and safety of our school community. CLCS is currently preparing the physical campus to support students in the fall of 2020, however the Administration recognizes that some families may not be comfortable with their child(ren) returning at that time. The Administration has developed three different re-entry options for our families to navigate. We want you to know and have confidence in the plans and efforts to provide the safest and most productive learning environment possible.

AS OF NOW, OUR PLANS ARE TO OPEN SCHOOL ON SEPTEMBER 8, 2020. PLEASE BE VIGILANT TO CHECK YOUR EMAILS DAILY FOR ANY AND ALL UPDATES. THANK YOU.

In consultation with CLCS's re-entry task force committee (compiled of medical professionals and educators) and guidance from our accreditation agency, CLCS is able to execute the physical campus modifications needed to support students safely returning to campus in the fall of 2020.





Option 1

On Campus Learning

Every Day, All Day

The administration of Cross Lanes Christian School is preparing for on campus school operations to resume in the fall of 2020. CLCS will follow specific health precautions which will be in accordance with our local, state, and federal requirements to the best of our ability. Specific decisions regarding on campus modifications will be finalized over the next several days, however, current considerations can be found on the last page of this re-entry plan.



The standard drop-off and pick-up times will *likely* remain the same. Parents will be asked to not walk their child(ren) into school buildings, but to remain in their vehicles and use the drop-off and pick-up lines only. Temperature scanning will take place in the car line, prior to entry on the bus, or prior to entry into the buildings. A specific colored wrist band will be issued to indicate that a student has been scanned before entering the classrooms. Anyone with a temperature above 100.4 degrees will not be allowed in school. Siblings of a child with a fever will not be allowed at school either.



CLCS's participation in athletics will be determined by guidance provided by West Virginia Christian Education Association, West Virginia Christian Athletic Tournament, and our accreditation agency (AACCS). Coaches are checking athlete's temperature prior to each practice. The Athletic Directors have issued a COVID-19 form to all athletes indicating how practices will be governed. Recess and Physical Education classes will be modified to follow Health Dept. guidelines for sanitation and social



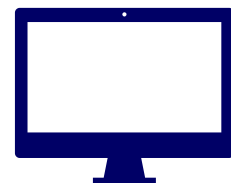
Elective choices and some after school activities may be altered or suspended for the 20/21 school year. At this time we are deciding on how to conduct Choir, recess, art, and Speech. A sub-committee of the COVID-19 Task Force is addressing this issue.



There will not be any field trips nor retreats for the first semester. For the first nine weeks students should not bring microwaveable lunches. Prepackaged lunches (i.e. Chick-fila sandwiches, etc.) will not be available to order or purchase for first quarter. Students will utilize space in the gym balcony, bleachers, and stage for lunch. Chapel will be held in the gym with social distance spacing guidelines provided. Entry-only and exit-only doors will be clearly marked.

Preparing for Interruptions

Following the recommendations from our Re-entry Task Force committee, CLCS is preparing for waves of interruption to on-campus learning. In the event our local community experiences a spike in COVID-19 cases and an interruption of physical operations occurs, a shift to CLCS Hybrid Learning platforms will happen immediately. CLCS is upgrading its Wi-Fi capabilities to fiber optic cable and servers to accommodate this new approach to learning. CLCS plans to install cameras in each of the classrooms so that students may benefit from attending classes remotely.





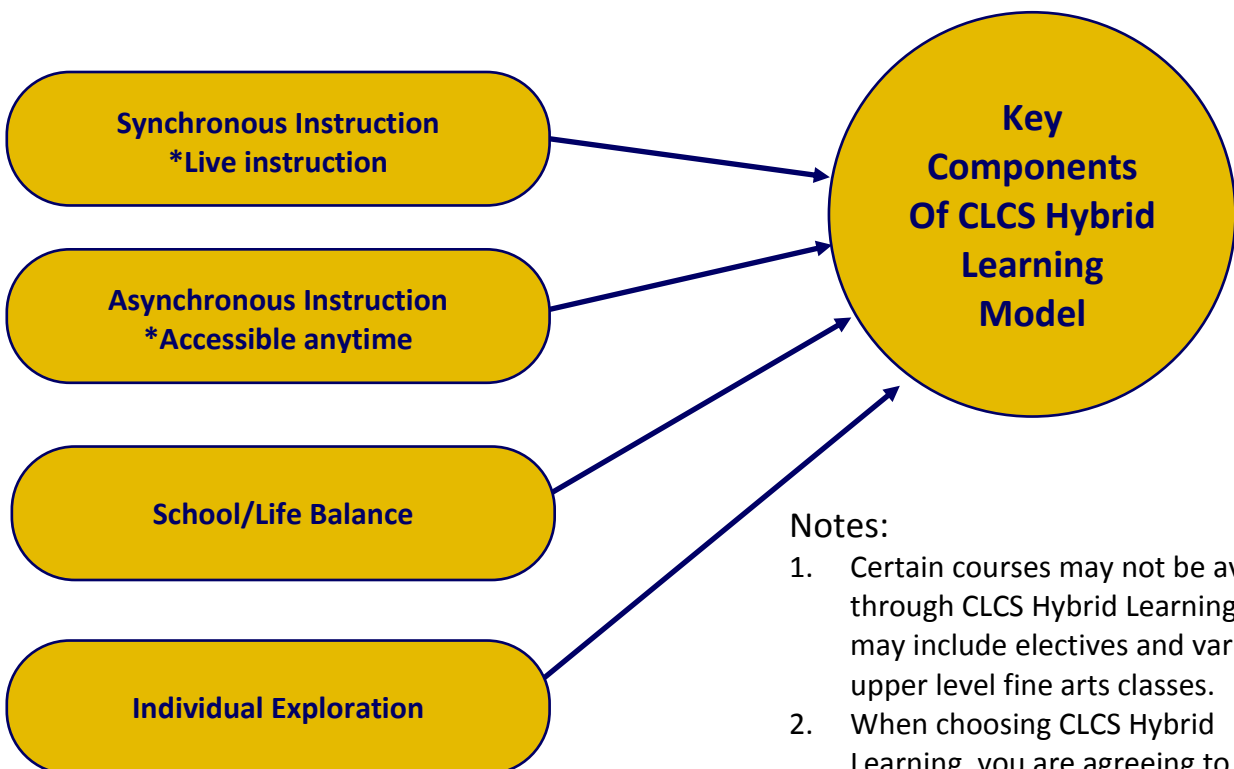
Option 2

CLCS Hybrid Learning (Blended Learning)

Due to the independent nature of blended learning, students interested in maintaining their status remotely must be a good candidate for this model. Candidacy is shown by a history of academic excellence, strong executive functioning skills, and recommendations from teachers. Students who typically struggled with getting their school work completed during unsupervised learning typically do not do well.

CLCS Hybrid Learning does not change our mission statement in assisting parents in their God-given responsibility of educating their children by providing a high-quality spiritual and academic program while encouraging children to live obedient, Christ-centered lives. The mission of Cross Lanes Christian School is one of preparing children to live a productive life for the Lord Jesus Christ.

This option would become available should CLCS not be allowed to meet for full days or for a full week. This option would allow for students to be in class for a portion of the day/week and receive the balance of their lessons via distant learning (Zoom, Google Classroom, Google Team, Google Meet or other platforms as deemed best for our classes).



Notes:

1. Certain courses may not be available through CLCS Hybrid Learning. This may include electives and various upper level fine arts classes.
2. When choosing CLCS Hybrid Learning, you are agreeing to your child being present (remotely) during synchronous instruction which will take place during normal school hours.
3. Parents are also agreeing to serve as proctors when required.



Option 3

CLCS Remote Learning (Distance Learning)

If COVID-19 cases are present in the student body, CLCS can smoothly transition to a virtual model as we did last Spring. If the Governor, in concurrence with the Department of Health and Human Services mandates that schools return to remote learning, CLCS will have a better plan and procedure to accommodate our students. CLCS will be purchasing and installing new wifi equipment prior to the opening of school in August. This fiber optic cable along with the teacher's Ipads will allow our classes to be live and taught from our campus to your home. Eventually, CLCS will add live cameras to each of the classrooms that will afford distance learning at anytime (i.e. when a student is ill at home or on inclement days).

Discussion boards will allow for classroom interaction. Social opportunities will be setup through Microsoft teams for each class. Continued training of our staff and students is a must to comfortably use this method with little or no frustration.

Families may also indicate a health or medical reason for their decision to remain in a remote capacity. For those who liked the virtual experience and want to continue being connected to CLCS while at home full time, that can be explored by further discussion with the CLCS Administration.

Additional Online Opportunity

Cross Lanes Christian School uses Ignitia™, provided by Alpha Omega Publications to provide an opportunity for students to take additional or current classes completely online as a self-study. This program is in accord with the educational plan for the school. It is 100% online and does not include "live" instruction nor does it coincide with CLCS curriculum.



Objectives:

- ◆ To offer an opportunity for *home-educators*, or homebound students, to come under the umbrella of a local school.
- ◆ To provide an opportunity for missionaries and/or Christians in remote areas to be a part of an accredited Christian school.
- ◆ To provide the opportunity for advanced students to take additional courses.
- ◆ For more information about this program go to our website: www.crosslanes.org and search of online learning.



The Physical Campus

While specific decisions and plans will be finalized over the next several weeks as our task force meets and more information with updated public health guidelines are issued, additional strategies will be developed in the following areas.

For more detailed information and the COVID-19 Task Force document, you may view the complete self-study on our website: www.crosslanes.org



Temperature checks, via thermal thermometers, will be required for students, faculty, staff, and vendors. Log books kept for references. Students with a temperature of less than 100.4 will be issued a colored wrist band to indicate that they have been checked. Masks will be required on the bus, or in outside of the classroom, or in transition.



Institution of capacity limits to allow for social distancing in spaces such as for chapel, classrooms, gym, etc.



Modification of programs and events in compliance with limits on crowd sizes and social distancing measures (i.e. music appreciation for the beginning of the year rather than performance).



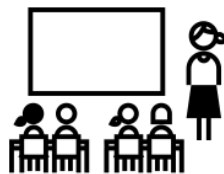
Continued use of online and virtual platforms in conjunction with in-person services to keep in-person contact at safer levels in the areas of Academic instruction, student activities and more



Sanitizing and cleaning processes. Plans are to fit some of our lavatory fixtures to “touchless” controls. Deep cleaning on a daily basis by the custodial crew. Sanitary wipes and additional hand sanitizer stations placed around the campus.



Changes and restrictions to campus access for visitors and parents. Limited entry to the buildings. Visitors will need to be scanned and monitored before access to students and faculty.



Temporary expansion of classrooms to allow for social distancing.

Classes will need to use hand sanitizer upon entering and exiting the classroom. Work areas will need to be consistently cleaned via approved wipes.



Pedestrian traffic flow signage posted on campus. Specific door for egress and entry. Staggered dismissal of building classes.